

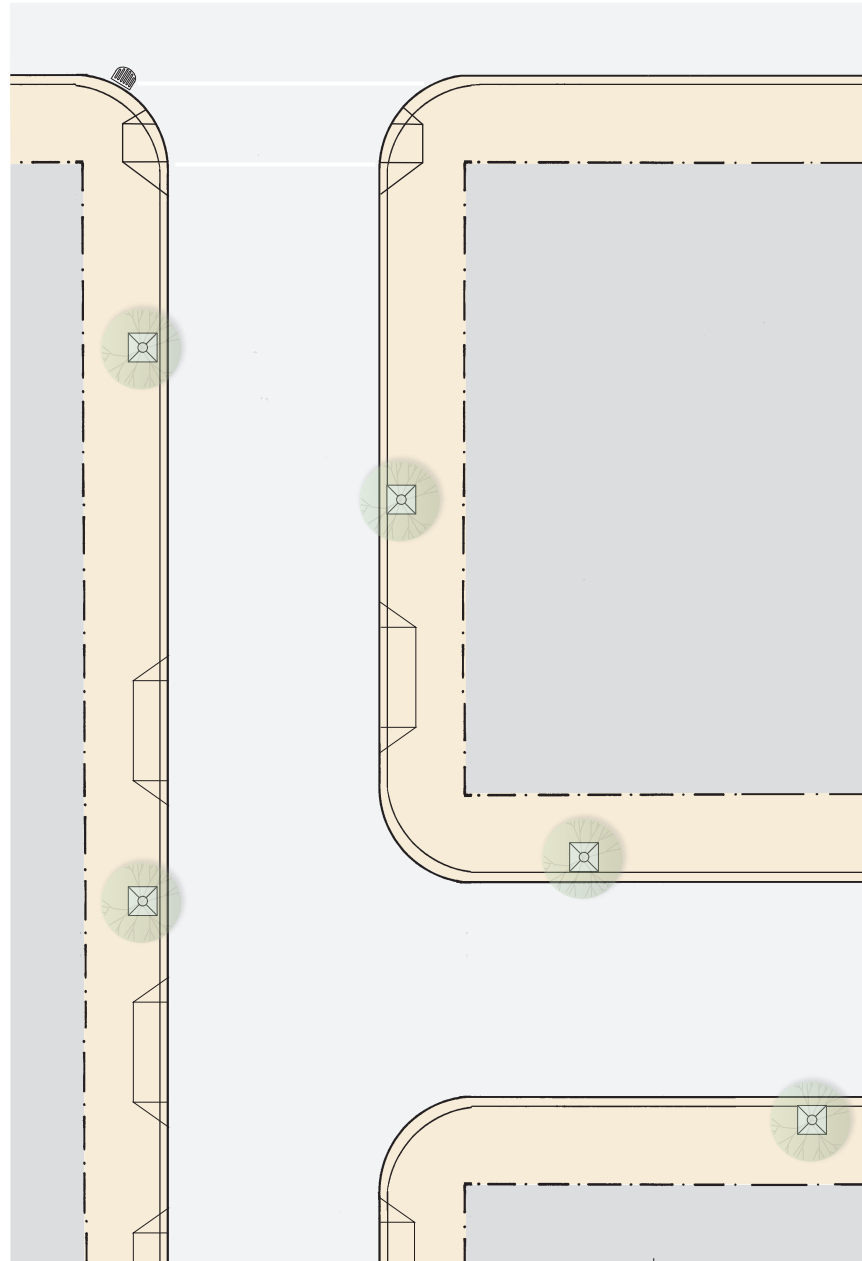
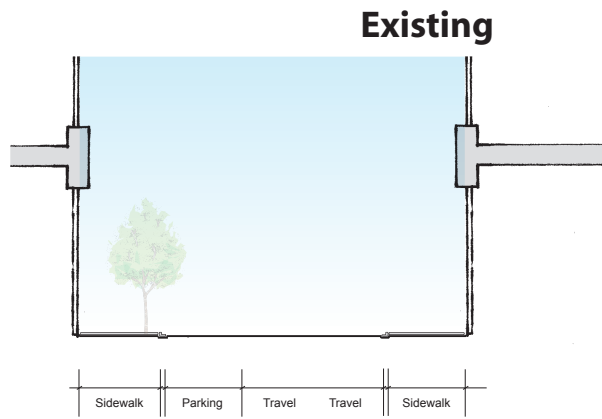
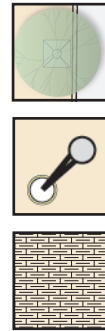
Residential alleys often serve as the primary street frontage of homes and have little through-traffic, making the entire right-of-way welcoming pedestrian- and neighborhood-oriented spaces that can be designed to feel like unique and special places.

**Existing Challenges Include:**

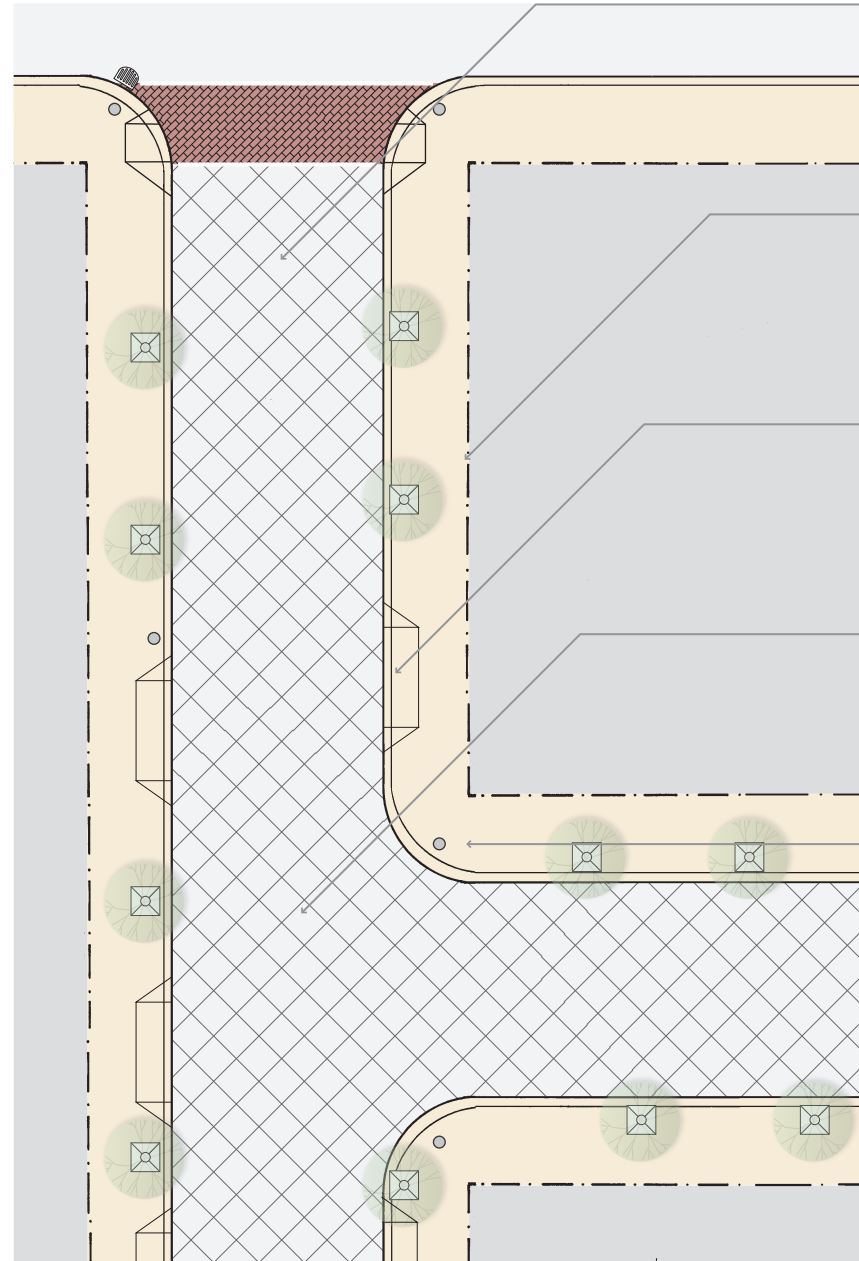
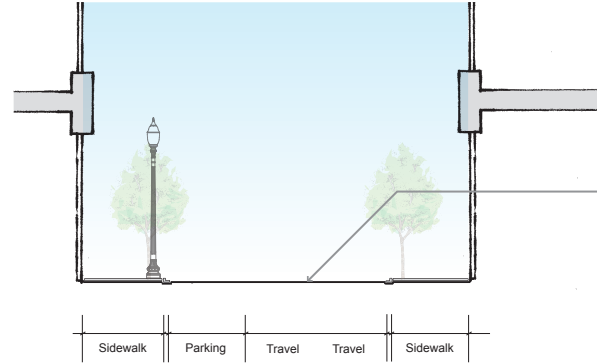
- Narrow right-of-way with need for parking limits ability to add significant pedestrian amenities on sidewalk (if one exists)
- Need to maintain safety of pedestrians, especially children and persons with disabilities if roadway is used by pedestrians

**Basic Improvements Include:**

- More consistent street trees in grates
- Pedestrian-scale lighting
- Special paving



**Basic Improvements**



**Kit of Parts to Consider**

**Shared Street (Woonerf):**

- Single-surface reinforces the idea of the entire alleyway as pedestrian/neighborhood space through which vehicles may carefully pass.
- Provides more space for landscaping and larger trees
- Installation can be costly; ADA issues must be considered

**Permeable Paver Drainage Strip:**

- Adds interesting detail to the streetscape
- Infiltrates stormwater runoff from the street and sidewalk and directs overflow to stormdrain inlet
- May require stormdrain relocation

**Terraced Planters (For Sloping Alleys):**

- Create raised garden and planter boxes along building frontages where building owners permit
- Channel stormwater runoff into varied and interesting landscaping for greenery and infiltration
- Can be designed as pre-cast units which work in series

**Permeable Driveways:**

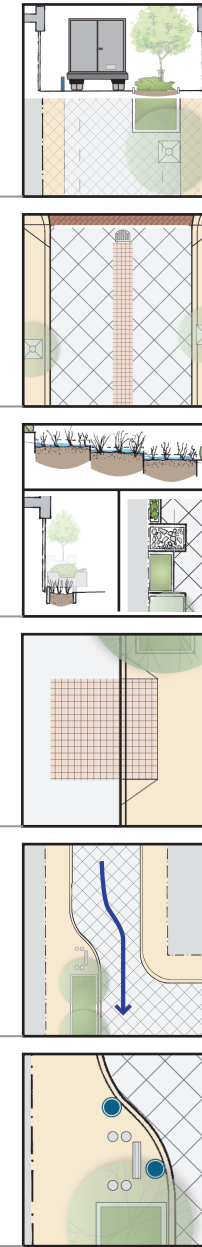
- Add interesting detail to streetscape and clearly demarcate driveways to discourage parking in front of them
- Infiltrate stormwater runoff from the street and sidewalk

**Chicane:**

- Slows traffic by obscuring long view down street and jogging lanes
- Can create space for landscaping, trees, and seating
- Installation can be costly

**Seating, Bollards, Other Neighborhood Amenities:**

- Create useable neighborhood spaces for sitting, playing, and relaxing
- Can include landscaping, trees, and other green features



**Alley**

*DRAFT*  
June 11, 2007

