

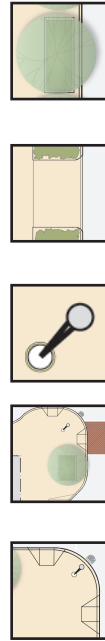
Residential “green” streets are found in lower-density residential areas, such as Park Merced and St. Francis Wood, where they take advantage of increased space to include significant green space on the sides of streets and on the median on larger streets.

Existing Challenges Include:

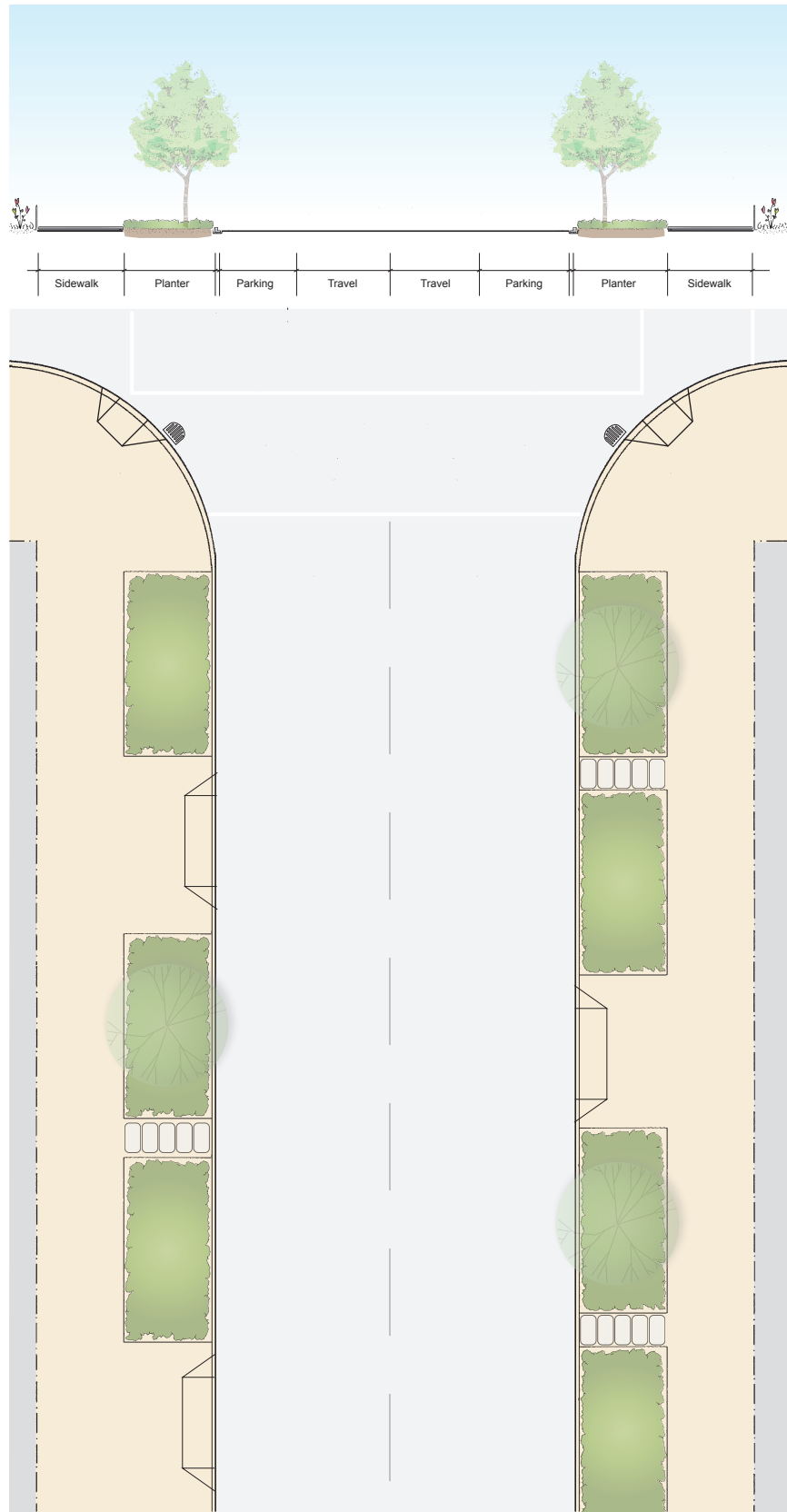
- Existing green space could be better designed to infiltrate area runoff
- Streets include minimal pedestrian accommodation

Basic Improvements Include:

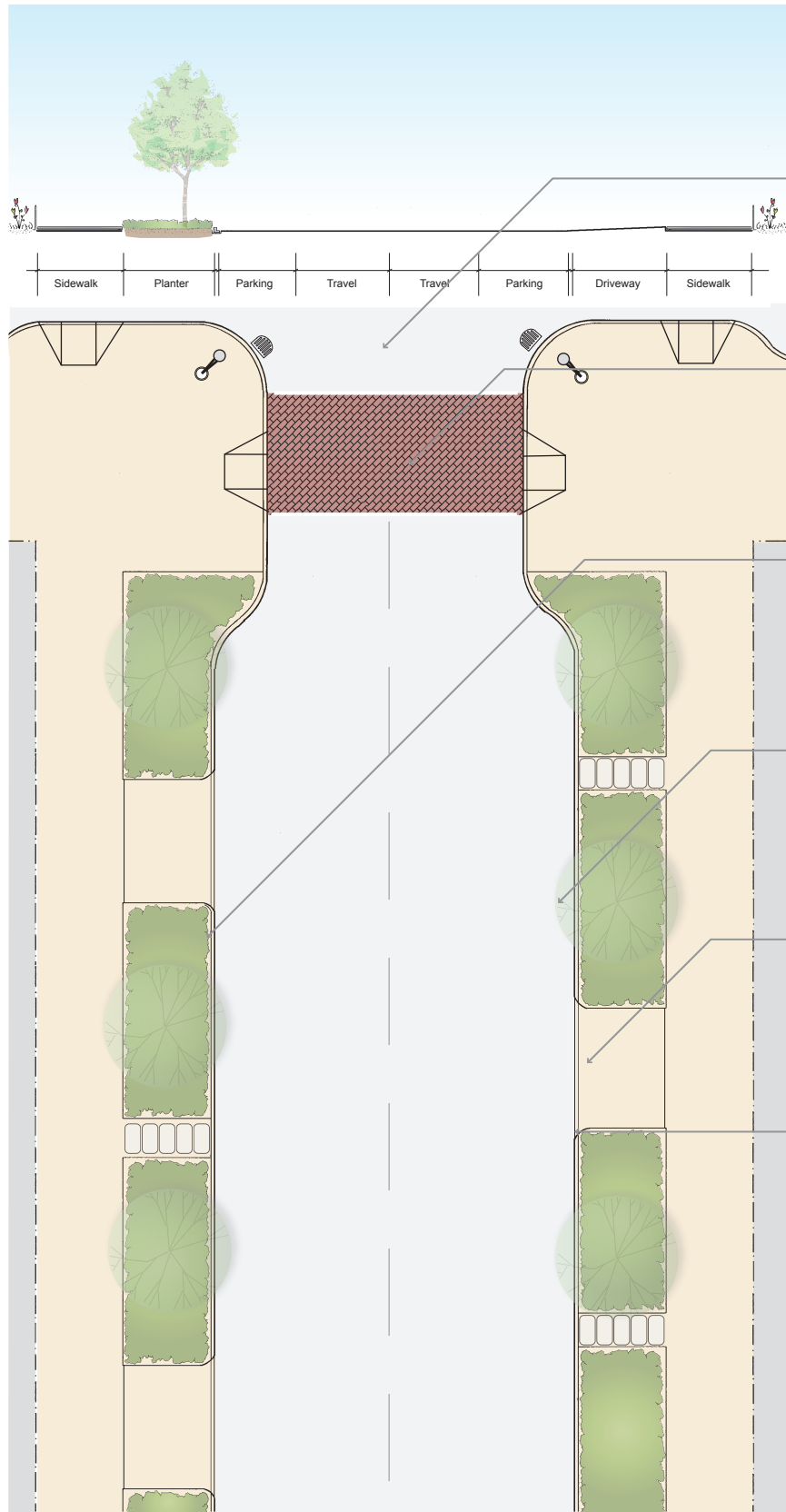
- More consistent street trees and extended landscaped planters
- Skirtless driveways to allow more sidewalk space for planters
- Pedestrian-scale lighting at street corners
- Corner curb extensions at corners with arterials and other major streets
- High visibility crosswalks with 2 curb ramps at each corner



Existing



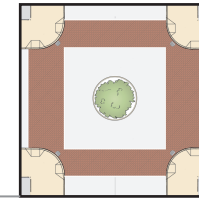
Basic Improvements



Kit of Parts to Consider

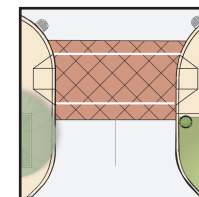
Traffic Calming Circle:

- Calms traffic at intersections
- Adds landscaping to large pavement expanses
- Not Appropriate on heavy traffic streets



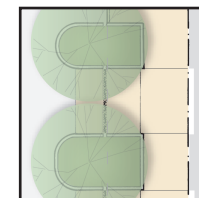
Raised Crossing:

- Slows traffic at intersections, increases visibility of pedestrian crossings and makes crossing easier for pedestrians
- Can be expensive to install



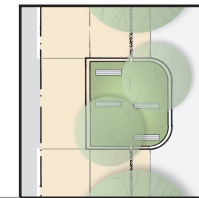
Extended Planter Between Driveways:

- Makes use of narrow spaces between driveways to visually narrow street, calming traffic and adding greenery to the streetscape
- Significantly increases tree root space for healthy growth and stormwater infiltration



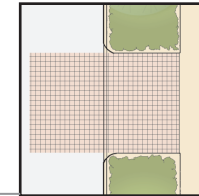
Sidewalk/Parking Lane Pocket Park:

- Provides useable open space and space for pedestrian amenities
- Increases green space in sidewalks
- Visually narrows the street to calm traffic



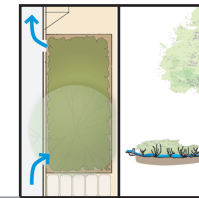
Permeable Driveways:

- Add interesting detail to streetscape and clearly demarcate driveways to discourage parking in front of them
- Infiltrate stormwater runoff from the street and sidewalk



Roadway Stormwater Infiltration Planting:

- Drains stormwater runoff from sidewalk and roadway to planters to store, cleanse, and infiltrate runoff as opposed to channeling to stormdrain
- May require additional maintenance



Residential “Green” Street

