

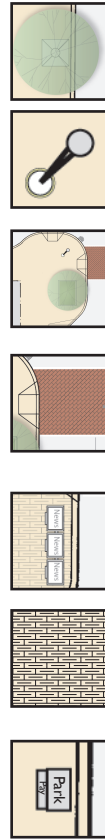
Neighborhood commercial streets commonly have a very high demand for every component of right-of-way space, from pedestrian thoroughway, to space for seating and landscaping, to a high demand for automobile parking and travelway.

Existing Challenges Include:

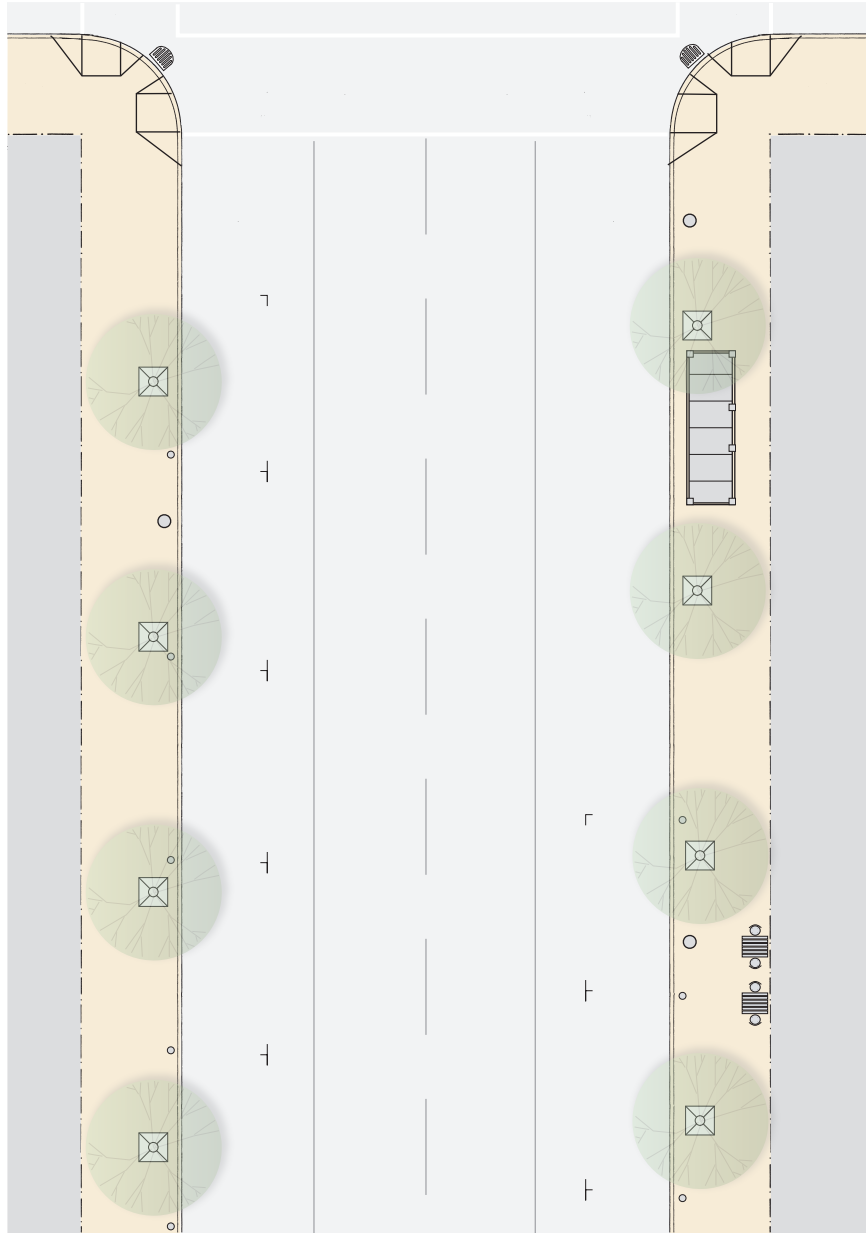
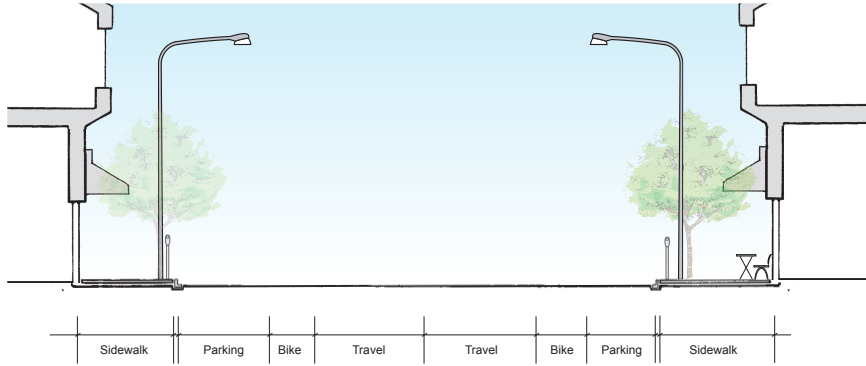
- Need for increased space for pedestrian through-travel, sitting and meandering
- The pedestrian realm often appears cluttered by the many amenities required to appropriately serve all needs of users of these streets.

Basic Improvements Include:

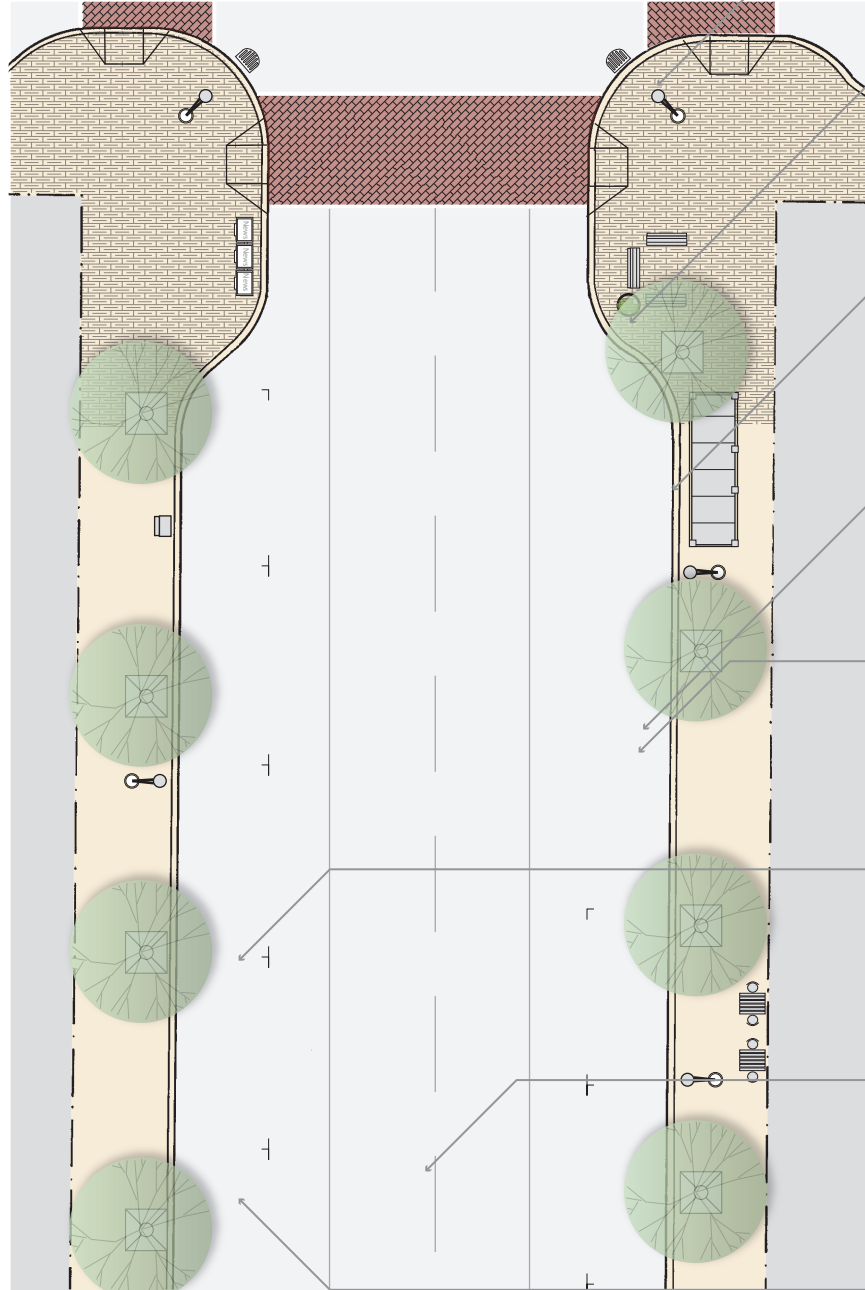
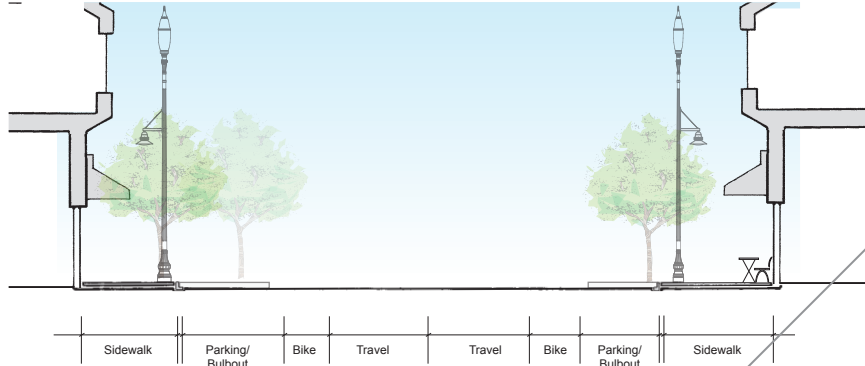
- More consistent street trees in grates
- Pedestrian-scale lighting
- Corner curb extensions
- High visibility crosswalks with 2 curb ramps at each corner
- A wide variety of furnishings for pedestrians
- Special paving in furnishing zones
- Combined parking meters and other measures to reduce streetscape clutter



Existing



Basic Improvements



Kit of Parts to Consider

Trench Drain in Bulbout:

- Adds visual interest to bulbout with attractive grate which makes access for cleaning easy and decreases the cost of bulbout because existing stormdrain does not need to be moved
- Maintenance can be costly; requires removable cover

Extended Bulbout for Transit Stop:

- Keeps bus in traffic flow and provides more space for waiting, loading, and unloading passengers
- Need to maintain clear space for loading and unloading
- Can be landscaped with planters and/or trees
- Installation can be costly

Infiltration Area Boardwalks:

- Add interesting material and texture to the sidewalk
- Create large areas for infiltration and planting
- Boardwalks are relatively easy to remove for access to utilities

Back-in Perpendicular or Angle Parking:

- Adds more parking to the street and narrows street visually to slow traffic
- Provides additional space between parking for landscaping or seating areas; stalls can have permeable surface for stormwater infiltration

Parking Lane Planters:

- Add attractive trees and greenery to the streetscape and visually narrow the street to calm traffic
- Can be designed to drain and infiltrate stormwater runoff
- Require removal of a half or whole parking space
- Can be difficult to maintain

Flexible Parking Zones:

- Parking spaces can be temporarily claimed for seating in front of cafes, bicycle parking, or other uses reflective of adjacent land use
- Temporary installation can be inexpensive
- Need for additional management

Mid-block curb extension plazas:

- Provides useable open space for landscaping, furnishings, cafe seating and other pedestrian amenities and Visually narrows the street to calm traffic
- Installation can be costly

Mid-block Crossing:

- Provides safe pedestrian crossing at mid-block locations on long blocks
- Can include trees and landscaping at bulbouts
- Installation can be costly and require a traffic study

Neighborhood Commercial

0 5 10 20 40 ft