

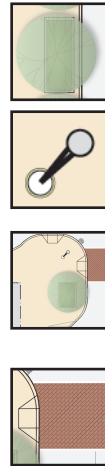
Neighborhood residential streets commonly have excessively-wide rights-of-way for a relatively limited volume of traffic. This excess space can better serve the residential neighborhood context by providing pedestrian amenities, attractive landscaping, useable open space, and stormwater infiltration.

#### Existing Challenges Include:

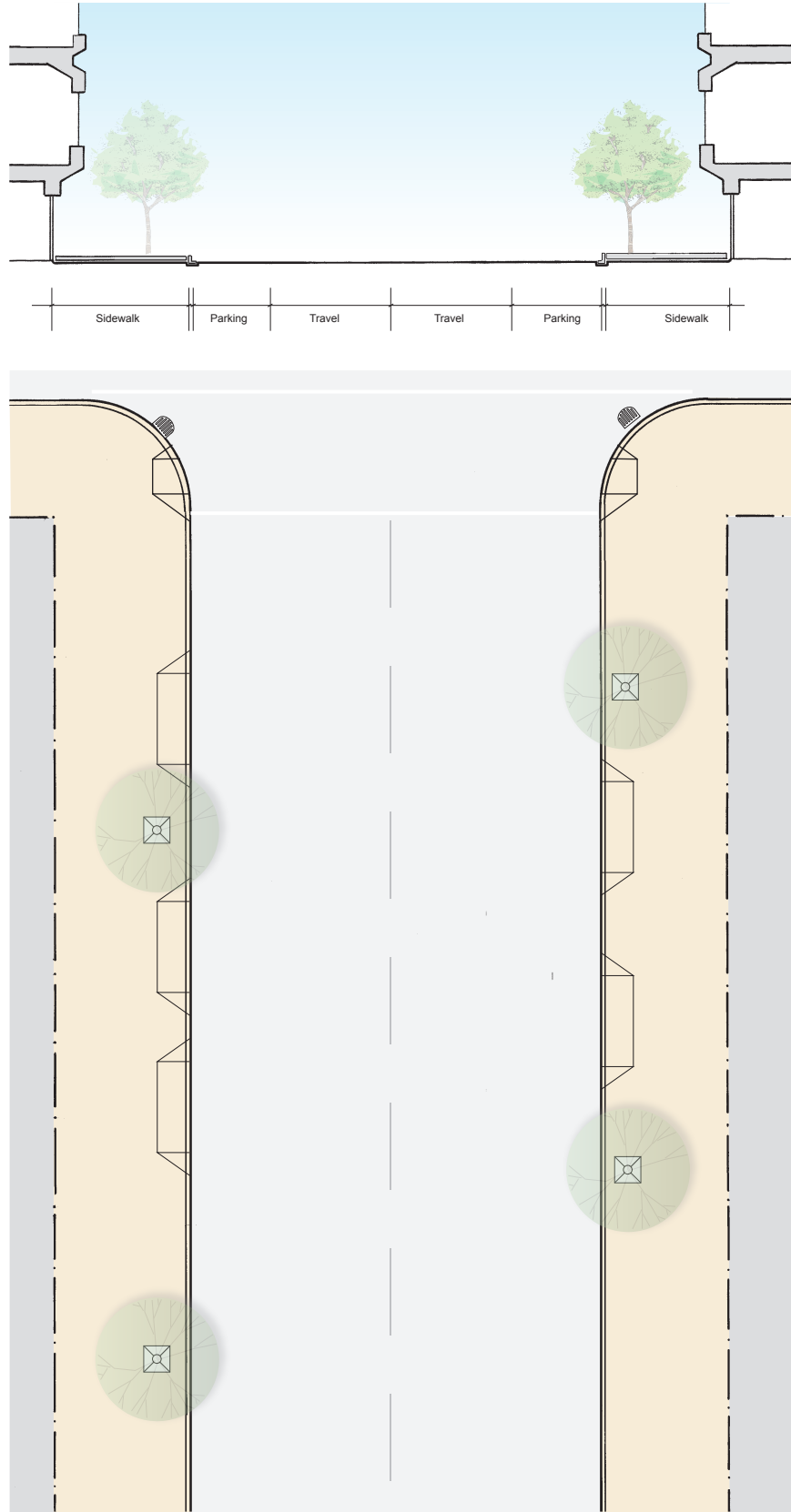
- Wide travelways encourage speeding and make for unsafe crossing
- Wide sidewalks are frequently interrupted by driveways, preventing street tree planting and amenities from occupying this otherwise substantial space

#### Basic Improvements Include:

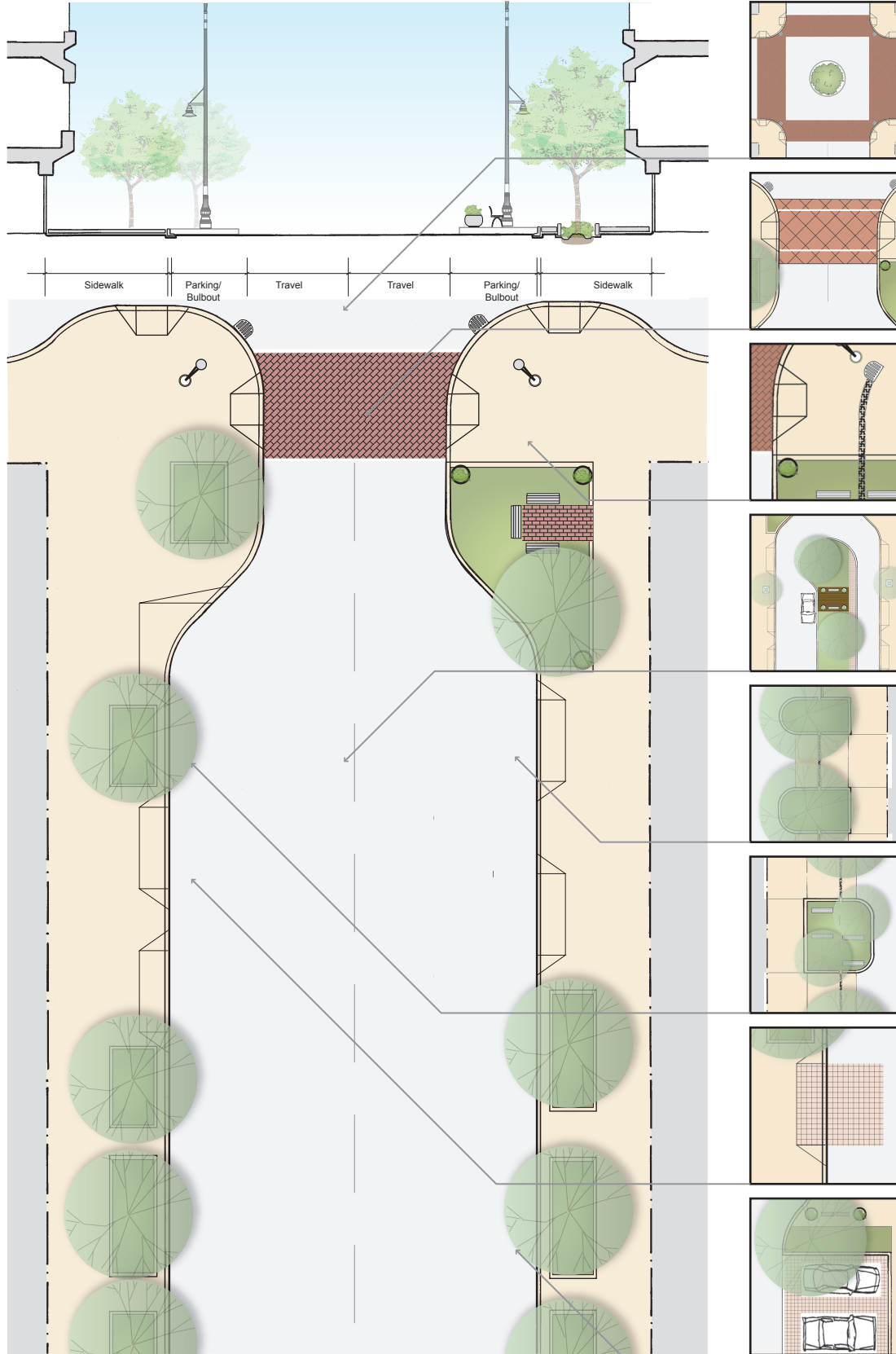
- More consistent street trees and landscaped planters
- Pedestrian-scale lighting at street corners
- Corner curb extensions at corners with arterials and other major streets
- High visibility crosswalks with 2 curb ramps at each corner



### Existing



### Basic Improvements



### Kit of Parts to Consider

#### Traffic Calming Circle:

- Calms traffic at intersections
- Adds landscaping to large pavement expanses
- Not Appropriate on heavy traffic streets

#### Raised Crossing:

- Slows traffic at intersections, increases visibility of pedestrian crossings and makes crossing easier for pedestrians
- Can be expensive to install

#### Trench Drain in Bulbout:

- Adds visual interest to bulbout with attractive grate which makes access for cleaning easy and decreases the cost of bulbout because existing stormdrain does not need to be moved.
- Maintenance can be costly

#### Useable Median:

- Creates significant useable open space on every street
- Adds landscaping and reduced imperviousness and can be designed to drain roadway runoff
- Implementation is expensive and requires moving curbs

#### Parking Lane Planter Between Driveways:

- Makes use of narrow spaces between driveways to visually narrow street, calming traffic and adding greenery to the streetscape
- Significantly increases tree root space for healthy growth and stormwater infiltration
- Can be interspersed with motorcycle and bicycle

#### Sidewalk/Parking Lane Pocket Park:

- Provides useable open space and space for pedestrian amenities
- Adds green space to sidewalks
- Visually narrows the street to calm traffic

#### Permeable Driveways:

- Add interesting detail to streetscape and clearly demarcate driveways to discourage parking in front of them
- Infiltrate stormwater runoff from the street and sidewalk

#### Perpendicular or Angle Parking:

- Adds more parking to the street and narrows street visually to slow traffic.
- Provides more space for landscaping and can be paved with permeable surface for stormwater infiltration
- Does not support heavy trucks

## Neighborhood Residential

0 5 10 20 40 ft