

PLAZAS AND GATEWAYS

# Dolores Street Gateway

The intersection of Dolores at San Jose is a key visual gateway to the Mission District. This identity and usability of this intersection would be improved by creating a significant open space at the entrance to Dolores Street, either by widening the existing median or by joining the existing median to the east sidewalk to create a pocket park. These designs build on the community vision prepared by Project for Public Spaces.

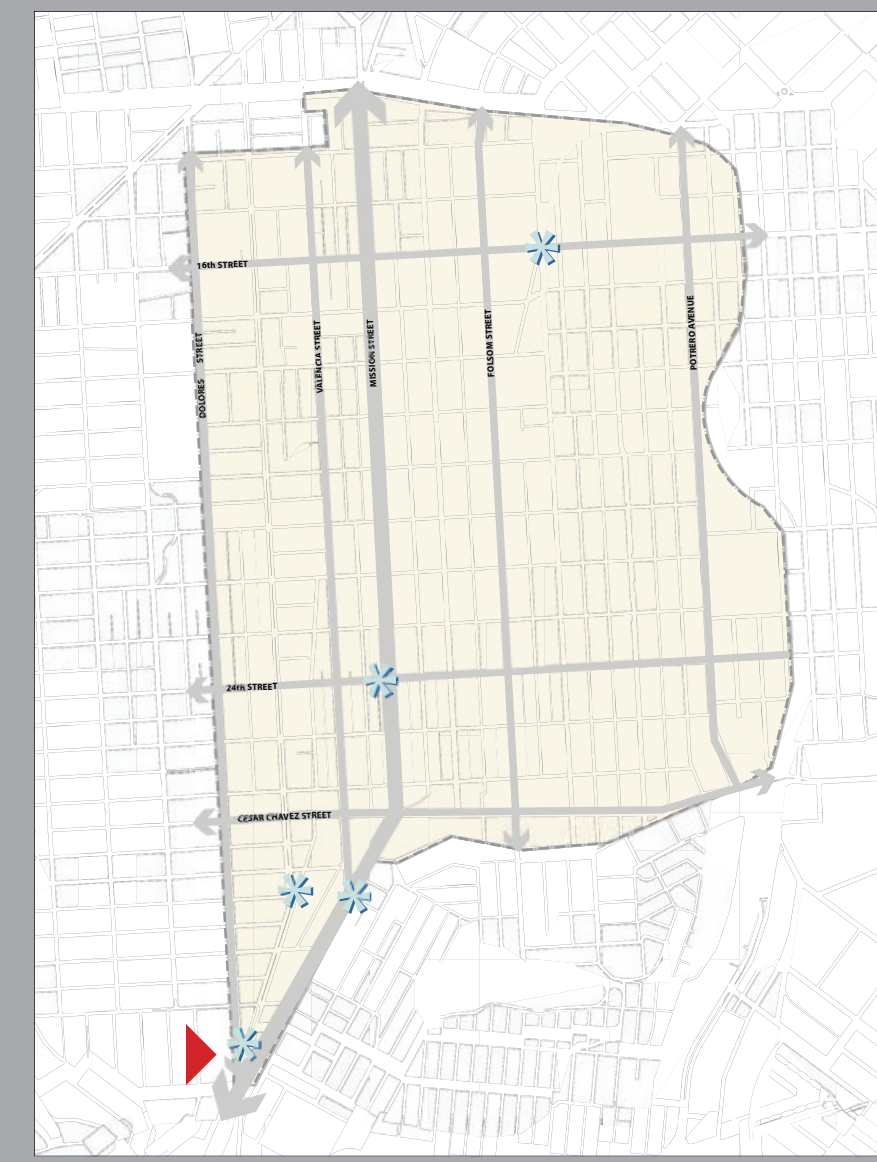
**POLICY C1**  
**CREATE NEW COMMUNITY SPACES BY RE-USING EXCESS PORTIONS OF RIGHT-OF-WAY, SUCH AS OVERLY-WIDE LANES AND UNUSED SPACE.**

**CRITERIA FOR SELECTION**

- Availability of right-of-way space
- Prominent, visible location

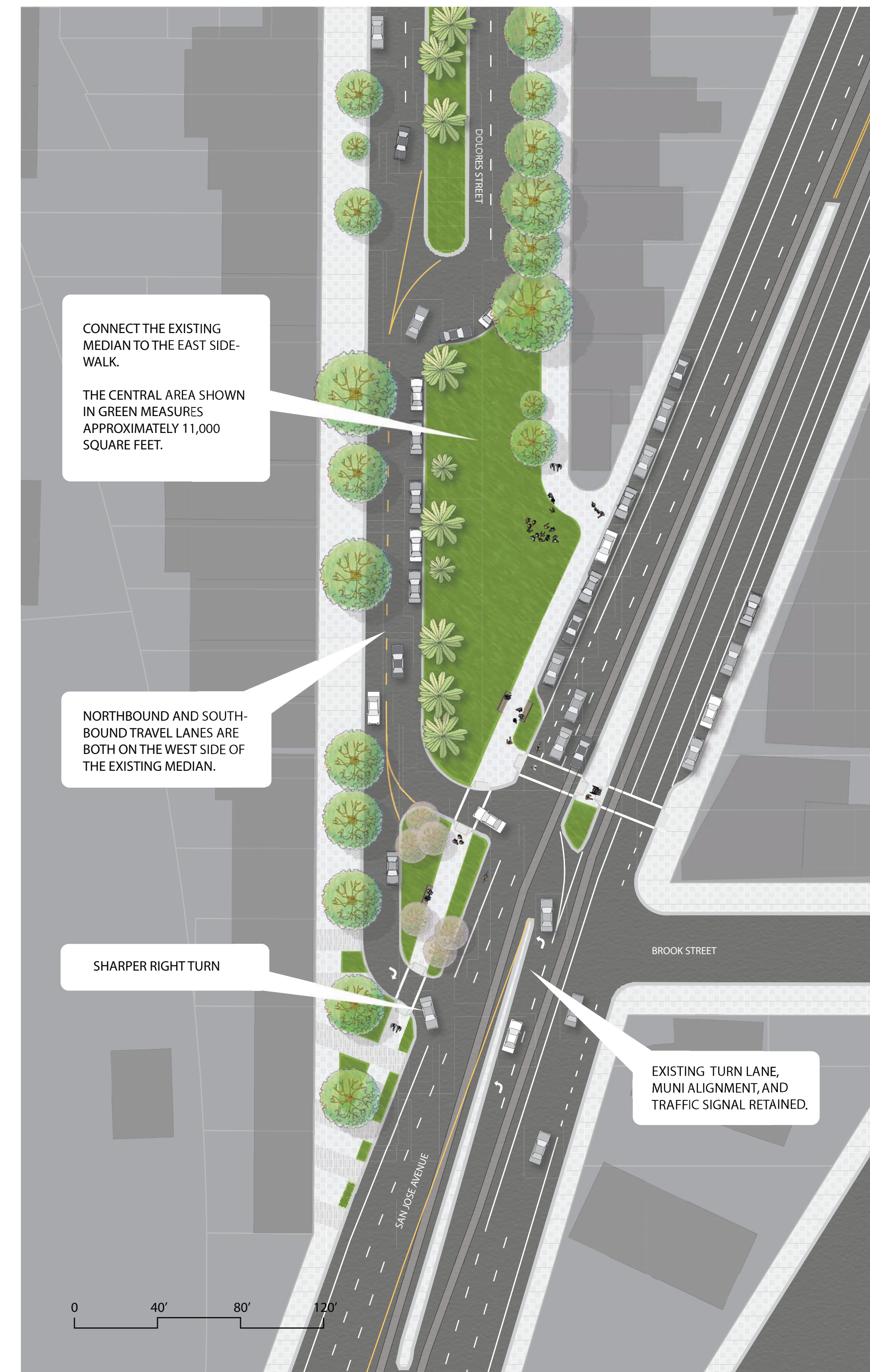
**PROJECTS:**

- 16TH/HARRISON/TREAT TRIANGLE
- MISSION/VALENCIA INTERSECTION
- SAN JOSE/GUERRERO INTERSECTION (Shown Previously)
- ▶ **DOLORES/SAN JOSE INTERSECTION**

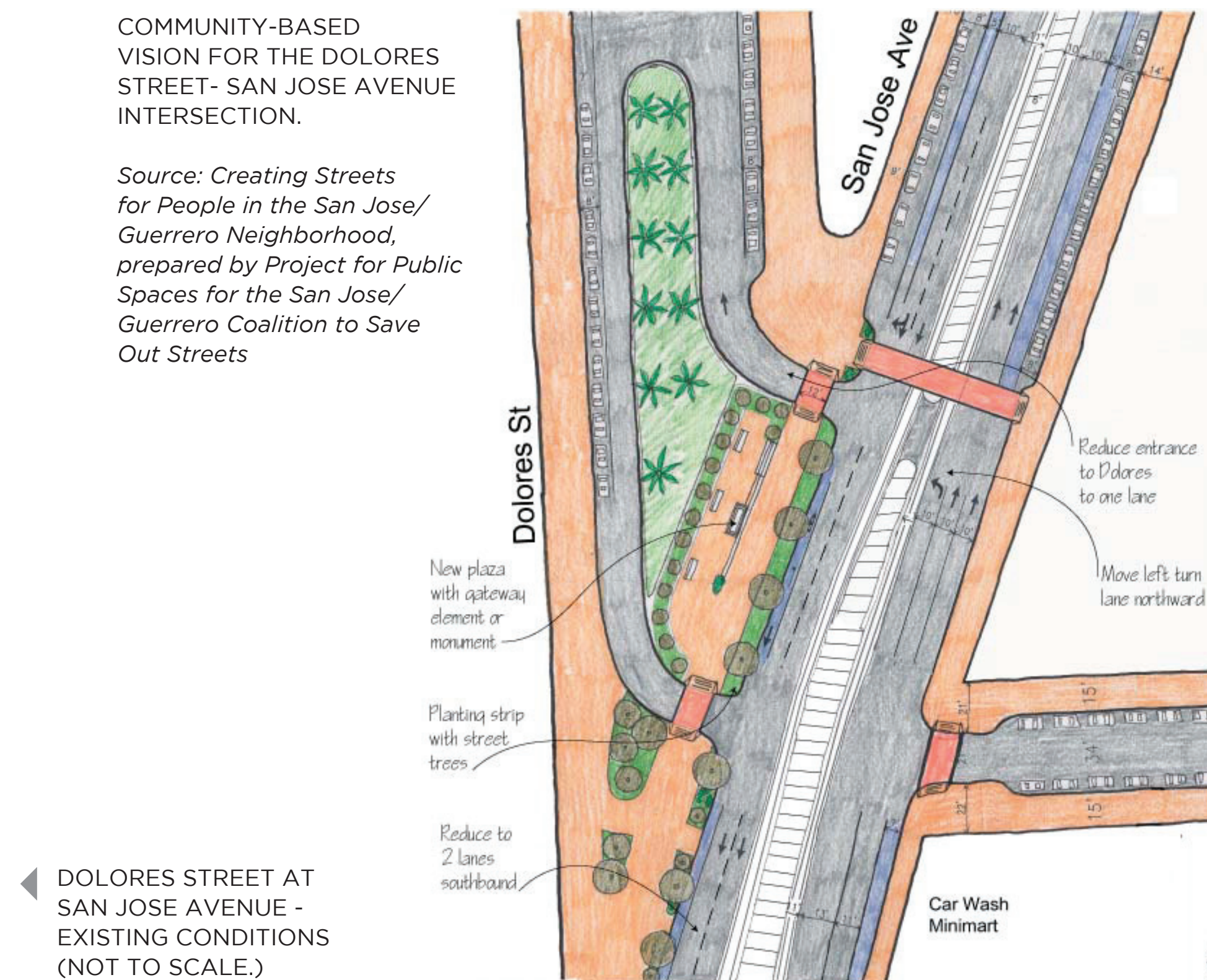
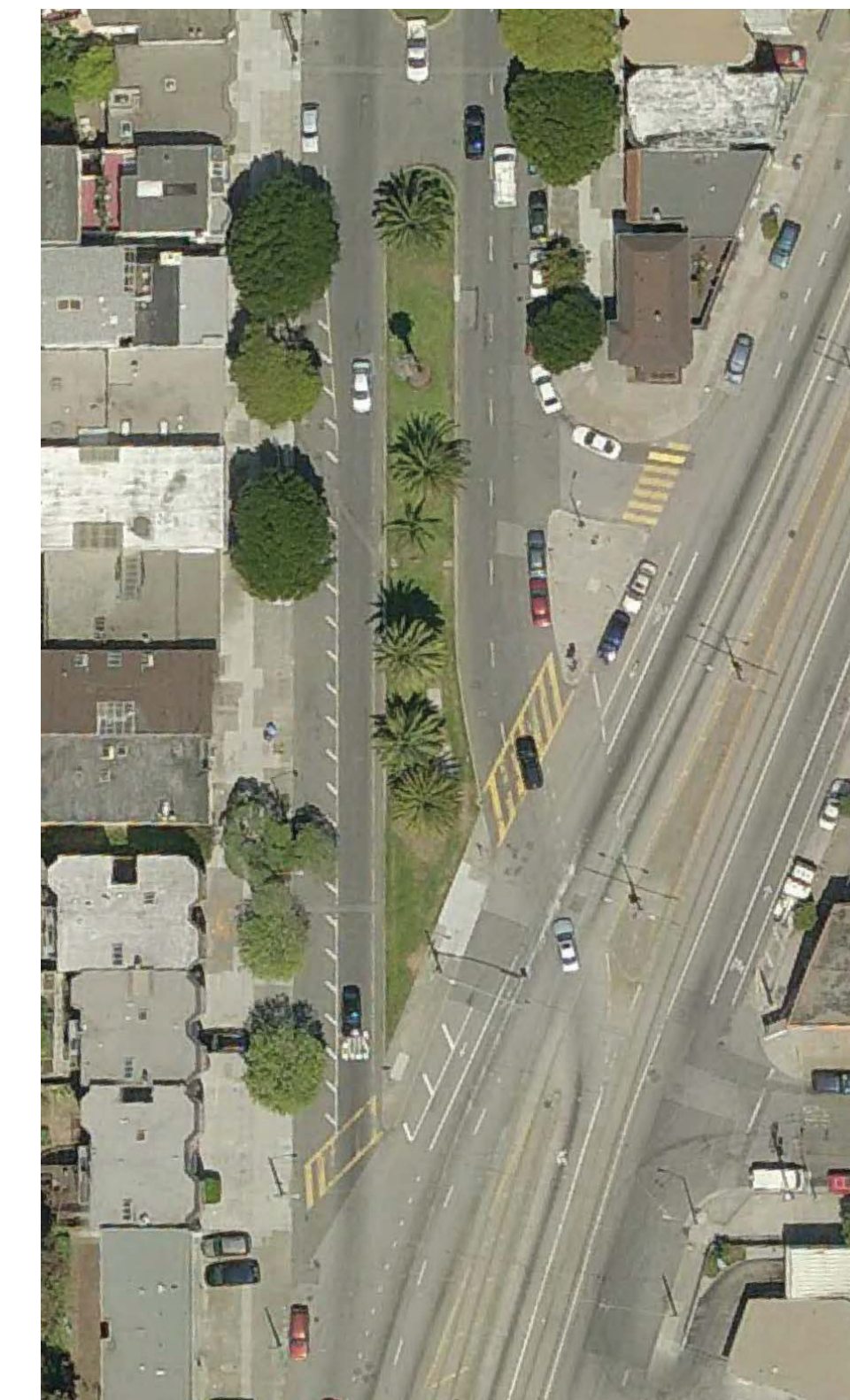
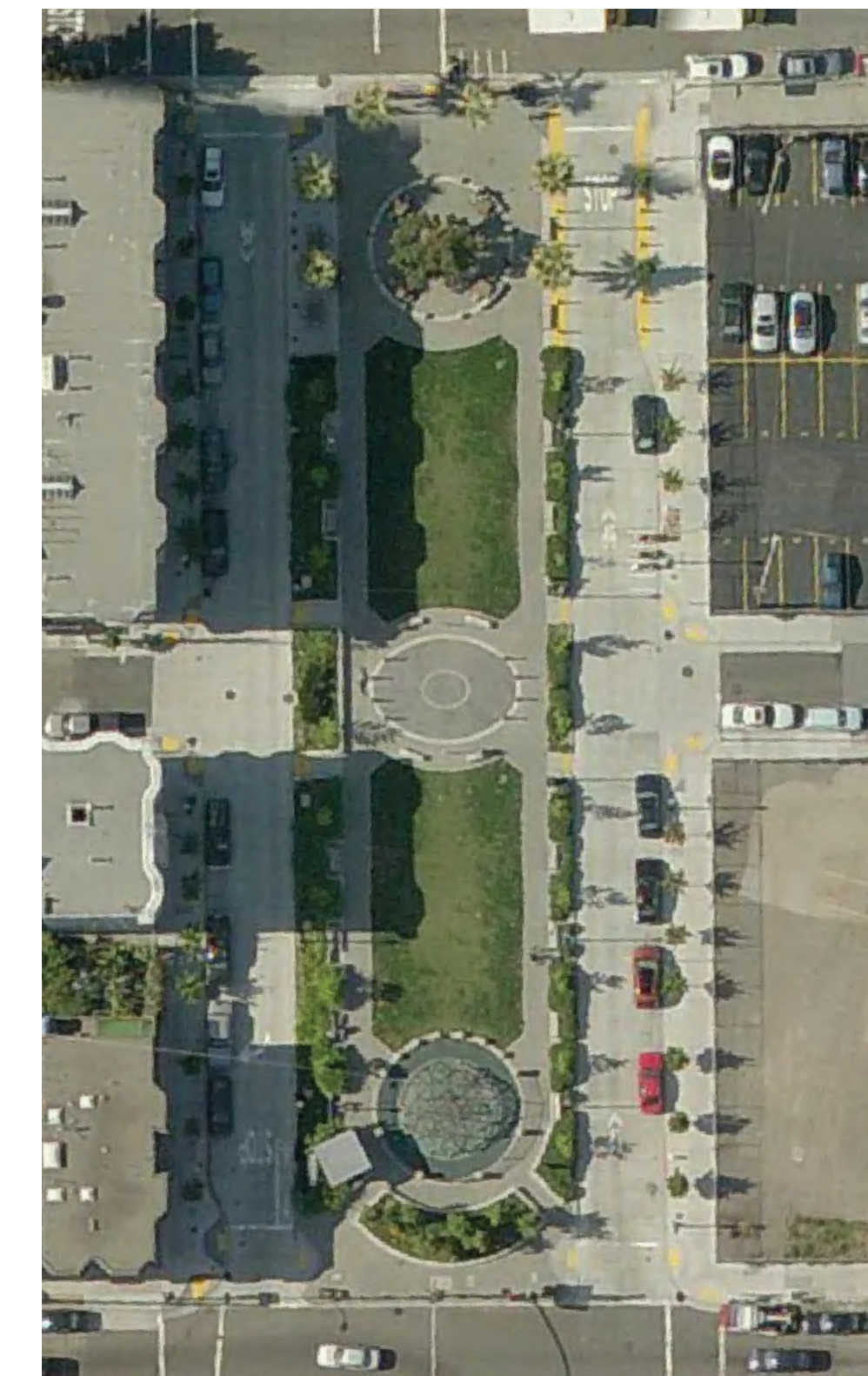
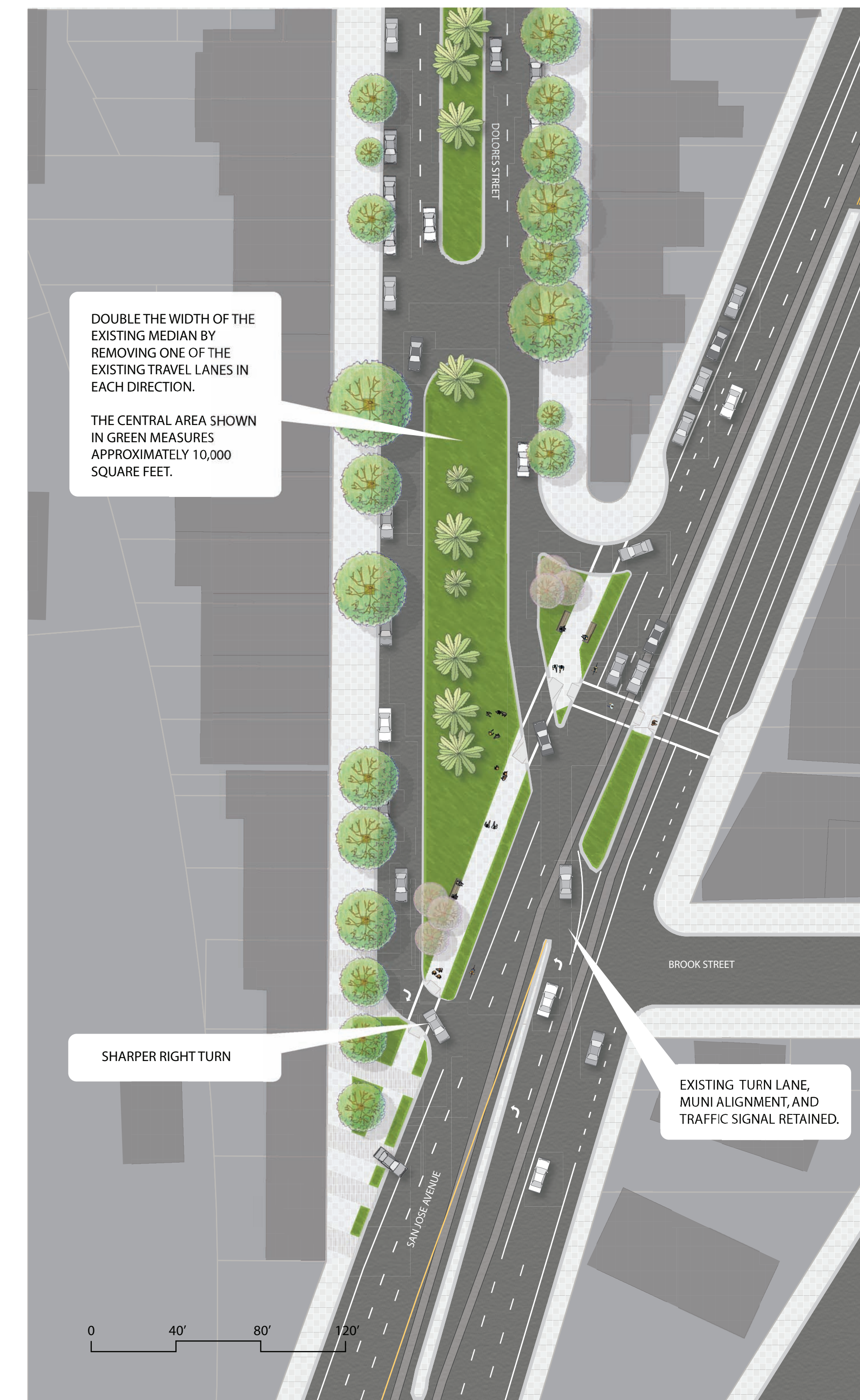


PATRICIA'S GREEN IN HAYES VALLEY (SCALE IDENTICAL TO OPTIONS 1 AND 2 ABOVE.)

**OPTION A - Connect the existing median to the sidewalk.**



**ALTERNATIVE B - Widen the existing median.**



DOLORES STREET AT SAN JOSE AVENUE - EXISTING CONDITIONS (NOT TO SCALE.)



Please write your comments on a post-it note and place them below each question.

1. What are the strengths and weaknesses of each option? Which option do you prefer?

2. What activities or facilities would you like to see in the new public space?